

OCTOBER 2017 / BOATINTERNATIONAL.COM

# BOAT



International

US  
EDITION

## JUBILEE

Step on board  
the 361ft  
record-  
breaker

### CREWS CONTROL

How to find  
the best crew  
(and get rid of  
the worst)

### SPORTFISH SPECIAL

THE BEST BOATS,  
DESTINATIONS  
AND CHARTERS

# In this issue

## Jubilee Page 164

Beam  $\updownarrow$  16.4m

Gross tonnage 4,523

Max speed: 18.5 knots


Engines: 2 x MTU 3,600kW

31 guests

46 crew

Designers: Oceanco; Azure; Lobanov Yacht Design; Sorgiovanni Designs  
Construction: Steel hull; aluminium superstructure  
Built: Netherlands | Launched: 2017

Length: 110.1m



## Project 783 Page 192

Beam  $\updownarrow$  12.58m

Gross tonnage 1,682

Max speed: 17 knots

Engines: 2 x MTU 16V 4000 M60

12 guests

25 crew

Designers: Nobiskrug; Reymond Langton Design; Mark Berryman  
Construction: Steel hull; aluminium superstructure  
Built: Germany | Launched: 2012

Length: 73.51m



## Vertige Page 234

Beam  $\updownarrow$  9.4m

Gross tonnage 499

Max speed: 16 knots

Engines: 2 x MTU 8V 4000 M54

12 guests

9 crew

Designers: Visibelli; Tankoa; Francesco Paszkowski; Margherita Casprini  
Construction: Aluminium  
Built: Italy | Launched: 2017

Length: 49m



## Telli Page 268

Beam  $\updownarrow$  7.68m

Gross tonnage 262

Max speed: 15 knots

Engines: 2 x 1,400hp MAN V12 LE466

10 guests

7 crew

Designers: Ferretti Group Engineering Department; Zuccon International Project  
Construction: Composite hull and superstructure  
Built: Italy | Launched: 2017

Length: 33m



## Marla Page 284

Beam  $\updownarrow$  8m

Gross tonnage <300

Max speed: 14 knots

Engines: 2 x Cat C18 ACERT

12 guests

5 crew

Designers: Umberto Tagliavini; Can Yalman; Esra Kasmirci; Numarine  
Construction: Steel hull; composite superstructure  
Built: Turkey | Launched: 2017

Length: 32.5m



## Checkmate Page 67

Beam  $\updownarrow$  6.55m

Displacement 49 tonnes

Max speed: 45 knots

Engines: 2 x MAN V12 1,800hp + MJP 450 DD

6 guests

2 crew

Designers: Wally; Luca Bassani  
Construction: Advanced composite  
Built: Italy | Launched: 2015

Length: 23.95m



## Barong D Page 298

Beam  $\updownarrow$  7.47m

Displacement 67 tonnes

Max speed under power: 13 knots

Engine: Cummins QSB 6.7

6 guests

4 crew

Designers: Frers Naval Architecture; Wally; Luca Bassani  
Construction: Carbon composite  
Built: Italy | Launched: 2016

Length: 33.51m




# A toast to good taste

*Italian yard Tankoa Yachts has uncorked Vertige, a full-bodied 49m packed with flavour, for a wine-loving owner. Clare Mahon reports*

Mixing business with pleasure can be a dangerous game but it's one that the owner of *Vertige* plays brilliantly. He was looking to move up in size to a boat he could use with his grown-up family, but also one that could host business meetings and be used for charter too. And he got it: a highly customised interior, with guest friendly layout, makes sure the clients are happy, and the presence of music and wine – in a boat named after his favourite white from the Rhône Valley – ensures that pleasure is plentiful for all.

Doing business with the builder, Tankoa Yachts, proved a pleasure too. Tankoa, which

was established in 2008 in Sestri Ponente, Genoa, bills itself as a “boutique shipyard”, presenting top-quality concepts for vessels from 50 to 90 metres that owners can customise to suit their needs.

The genesis of *Vertige* backs up the yard's philosophy: the owner saw a model for the 49 metre Tankoa S501 displacement series, fell in love with it, signed the contract in early 2015 and received his new superyacht in 2017. She is the yard's second completed build after the 70 metre *Suerte*, launched in 2015. It also has a 72 metre under construction. “All of the hull





PHOTOGRAPHS: ALBERTO COCCHI; BLUE PRODUCTIONS

expanded and now do the cutting and metalworking in Sestri,” says Karsenti.

Francesco Paszkowski Design created the hull, superstructure and interior, the last in collaboration with Margherita Casprini. If you look at *Vertige* from her high plumb bow, her low superstructure makes her appear like a crouched animal that could unleash hidden power and pounce at any moment. But moving around the yacht, what looks like the top of the freeboard becomes part of the superstructure, a line that is carried fore to aft in an easy sweep.

“*Vertige*’s hull shape has proved to be very stable and smooth,” says Captain Filippo Belli.

*The three decks offer plenty of outdoor living options, but of course there is more. The transom opens to become a large beach platform with easy access to the sea*

“The combination of this hull shape, slightly detuned MTU 746kW engines and Vosper Naiad zero speed stabilizers is a real plus for charters. The yacht is very quiet and stable and you can’t feel vibration at all.”

The interior, which Paszkowski designed to be under the 500GT threshold to help keep management costs down as per the brief, presents a cool, calm atmosphere. “*Vertige* was really a yacht that was created step by step by a team made up of my design studio, the shipyard and the owner, with whom we worked in harmony right from the start,” says Paszkowski. “It was important to create visual continuity with the sea, so we used lots of large windows. The interiors are balanced between natural and bleached teak and dark polished rosewood. The rosewood, especially, was important for creating the sophisticated style that we wanted, a kind of modern interpretation of the 1950s.”

The owner wanted the outdoor spaces to be as large and comfortable as possible and he certainly got what he was looking for. On the aft main deck, sofas and loungers can easily accommodate 14 people and are shaded by awnings that admit light and air but filter out UV rays. Two coffee tables have *Vertige*-themed, V-shaped supports in natural teak, while a nearby teak and golden glass bar has a convenient refrigerator and icemaker. Two fold-out terraces add valuable extra square feet of floor space and open up the view to the water even further.

The upper aft deck’s 14 seat dining table is the owner’s favorite place for meals. Sofas and low tables are on hand nearby for coffee in a welcoming spot that can be shaded with umbrellas. For guests who can’t bear to miss a game or want to enjoy a film al fresco, a 65 inch flat screen television and speakers are hidden in the ceiling above the dining table. And a refrigerator and icemaker in a built-in cabinet at the foot of the stairs leading to the sundeck indicate careful crew service planning.

The owner paid special attention to the large salon on the upper deck and the relaxation area forward. “This is the quiet area aboard, the place to come to just enjoy the view,” says Captain Belli. Adjustable-height tables can be adapted



An aluminum displacement hull and twin MTU engines give *Vertige* a top speed of 16 knots and a range of

5,000nm at 12 knots. A modified plumb bow, a hard chine and high freeboard minimize spray while under way





“The interiors are balanced between natural and bleached teak and dark polished rosewood. The rosewood was important for creating the sophisticated style we wanted, a kind of modern interpretation of the 1950s”

to make the area a huge sunning (or napping) platform shaded by the same UV-filtering awnings found on the other decks.

The sundeck is the perfect place for cocktails, in the owner’s view. The area is protected by a wraparound glass partition that reduces the breeze while keeping views to the water free and open. Forward is a spa pool surrounded by loungers, while aft are chaises longues that can be repositioned at will. The hardtop conceals a retractable awning and has louvers in the center so that the banquettes and convertible tables beneath it can be shaded if necessary.

Also in the hardtop are built-in Bang & Olufsen speakers, just part of the state-of-the-art, iPad controlled sound equipment that this music loving owner has installed throughout the yacht. There is a golden glass and teak bar to starboard similar to the one on the main deck, but with not only a refrigerator and icemaker but also a teppanyaki grill and a 42 inch television.

These three decks offer plenty of outdoor living options, but there is more. The transom opens to become a large beach platform with easy and direct access to the sea. When the transom is open, guests use the symmetrical staircases that lead down from the main deck aft to access a gym, complete with the latest

Technogym equipment, and a dayhead with a spa steam shower. In port, the gym can be screened from view by light curtains.

All of this would certainly make the charter vacation of my dreams, but it is when Captain Belli shows me the refrigerator in the gym – another one! – that I discover what makes *Vertige* such a special yacht. The trail of refrigerators and icemakers – four spotted so far, and I haven’t even entered the interior yet – is leading me to the heart and soul of this boat.

Captain Belli beckons me to follow him through the main salon’s living and dining areas. I barely have time to admire the views through the huge windows, or the Jerusalem stone wall with burnished brass accents, before we pass through the dramatically lit entrance hall and open a door.

Now I understand what makes *Vertige* and her owner unique. The entire inboard wall of the corridor we are in is lined with a retro, illuminated, floor to ceiling wine cellar – or rather showcase, since this is not hidden away. It contains 300 bottles of the finest wines, including a generous cache of the owner’s favorite, *Vertige* from Domaine Yves Cuilleron. This very aromatic dry white from the north Rhône region is made from 100 per cent Viognier grapes.

“Constructing this cellar was a bit of an engineering feat,” says Karsenti, “because the different compartments contain wines that



Left: the curved teak staircase that starts from the lower deck. Below: the study in the owner’s suite, complete with Eames lounge chair

Opposite page: the owner’s suite has fold down balconies to either side. Below: the sky lounge doubles

as a movie theater. Francesco Paszkowski used dark rosewood for a 1950s feel

PHOTOGRAPHS: BILUEI PRODUCTIONS





have to be kept at different temperatures. The owner's real passion is for whites but he also stocks reds and wants them all stored correctly." Hence coolers and icemakers everywhere.

But this is just the beginning of the story. A door from the wine corridor leads to a beautifully appointed VIP cabin with a Mies van der Rohe chair, leather fronted wardrobe, woven leather headboard and silver silk curtains. It has a 55 inch television and a mini refrigerator, naturally. The en suite is lined in precious onyx.

Another door leads to an equally beautiful full beam owner's suite that is a larger version of the VIP with the addition of a study, dressing table, an Eames lounge chair with ottoman, a magnificent en suite with his-and-hers basins and spa shower, and a walk-in closet. As a bonus, it also has spectacular opening side terraces. And, yes, there is another refrigerator.

VIPs are VIPs but owners are kings, so why have the VIP cabin so close to the master suite? "This layout was the owner's decision," says Karsenti. "He said he would be using the yacht for business meetings and couldn't imagine entertaining an important business contact and then sending him or her down to a lower deck to sleep. It just didn't sit well with his idea of hospitality. Two very top suites also work well on the charter market."

So the picture becomes clearer: the owner loves music, wine and people. He uses his yacht both for and as business, and when he is not hosting private meetings and entertaining clients, he charters. The layout includes four lower deck guest cabins - three doubles and a twin that can be converted to a double, or even a triple by pulling down the Pullman berth. There's another mini refrigerator behind the

teak paneling in the guest foyer. The crew of nine was also chosen with chartering in mind. They come from the owner's native France, Italy, Ukraine and the Philippines and can speak nine languages between them. However, crew and guest areas are kept separate.

"The yacht is organized so that crew use the port staircases and corridors and the owner and guests use the starboard ones," says Belli. "It works well for everyone because it keeps work paths free and protects the privacy of guests."

En suite crew quarters are on the lower deck and the captain's cabin, also en suite, is on the upper deck next to the wheelhouse. The crew staircase connects their quarters to a large pantry on the main deck and a pantry just off the bar on the upper deck. Guests, meanwhile, can get to the various decks using the dramatically lit curved teak staircase with leather lined walls and floors.

When the doors to the crew passage are closed, they are so well integrated into the paneling and walls that no one would ever notice them, making this a boat built for privacy as well as business and socializing - and the owner will surely want to drink to that. ■

There are plenty of outdoor spaces, including the main deck aft below, as well as the sundeck, bottom, and owner's balcony, opposite page



## VERTIGE

## TANKOA YACHTS

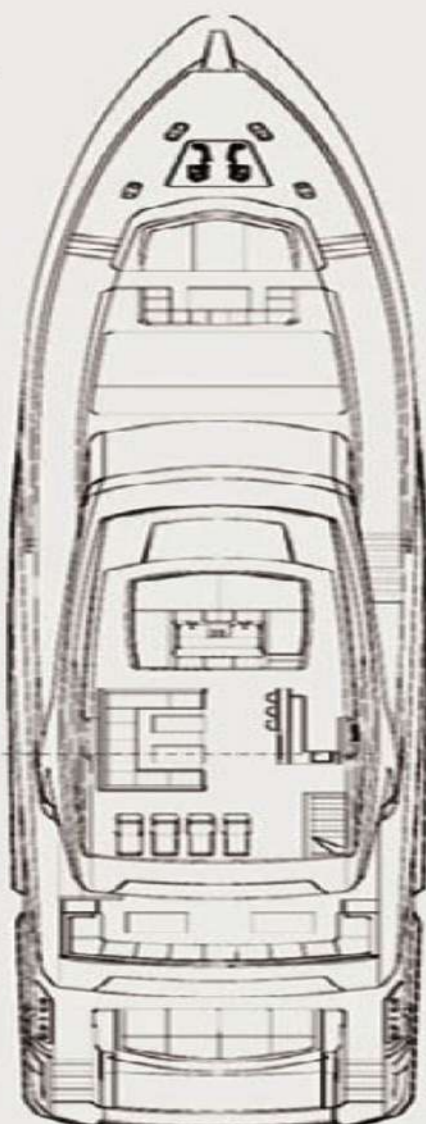
## SUNDECK

## BRIDGE DECK

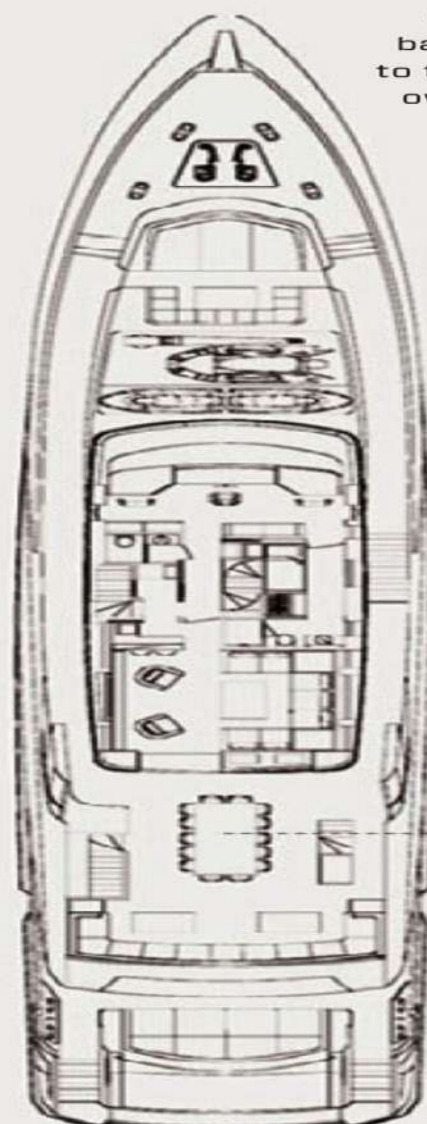
## MAIN DECK

## LOWER DECK

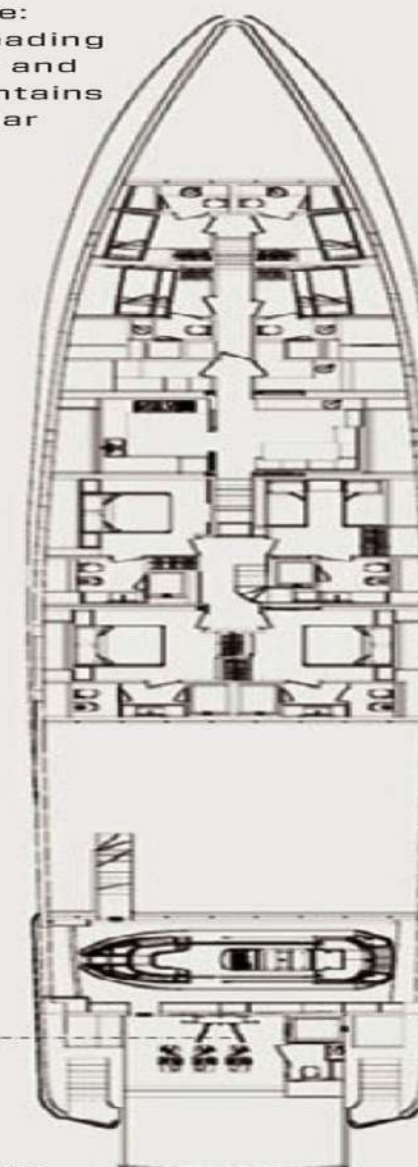
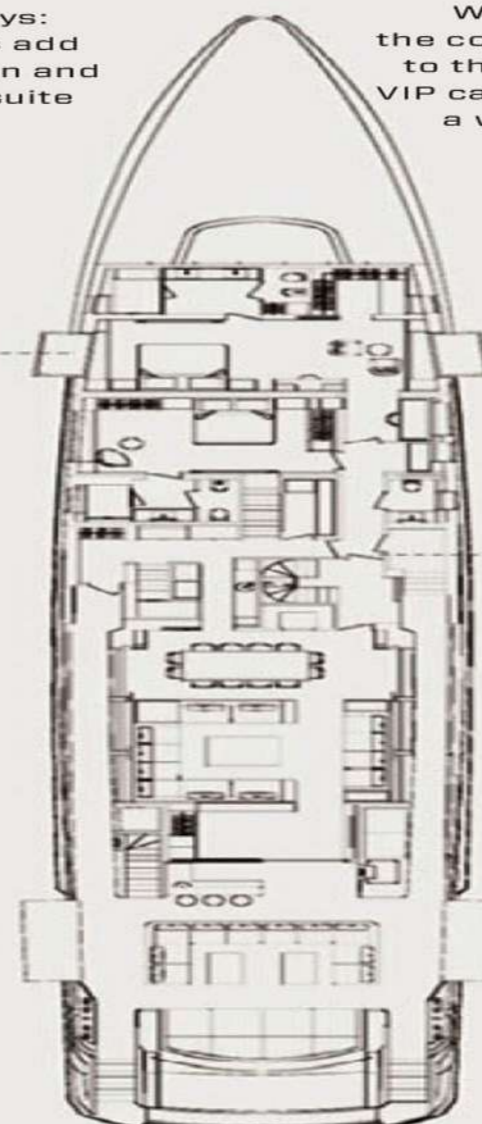
Sizzling: the sundeck has a teppanyaki grill and bar



Side ways: balconies add to the salon and owner's suite



Wine route: the corridor leading to the owner and VIP cabins contains a wine cellar



60ft

30ft

0ft

Drop down: a 65in TV is hidden above the dining table

Work out: a gym is forward of the swim platform

**LOA** 163' 8"  
**LWL** 162' 1"  
**Beam** 30' 10"  
**Draft (full load)** 7' 2"  
**Gross tonnage**  
 499GT  
**Engines**  
 MTU 8V 4000 M54R  
 Tier III

**Speed max/cruise**  
 16/14 knots  
**Range at 12 knots**  
 5,000nm  
**Generators**  
 2 x 125kW  
**Fuel capacity**  
 17,170 gallons

**Freshwater capacity**  
 4,385 gallons  
**Tenders**  
 1 x 22'  
**Owners/guests** 12  
**Crew** 9  
**Construction**  
 Aluminum

**Classification**  
 Lloyd's Commercial  
 Yachts, MCA LY3  
**Naval architecture**  
 Visibelli/Tankoa  
 Yachts  
**Exterior styling**  
 Francesco  
 Paszkowski

**Interior design**  
 Francesco  
 Paszkowski/  
 Margherita  
 Casprini  
**Builder/year**  
 Tankoa  
 Yachts/2017  
 via Cibrario,  
 1H, 16154

Genova, Italy  
 t: +39 010  
 8991100  
 w: tankoa.it  
**For charter**  
 Visit northropand  
 johnson.com