

SKIPPER

# ONDECK



€ 7,99

INTERNATIONAL YACHTING MAGAZINE | WWW.SKIPPERONDECK.COM

FROM **CANNES**  
TO **MONACO**

**BENETTI SE77ANTASETTE** LÜRSSEN ARETI 85M

**SANLORENZO 52 STEEL** APREAMARE GOZZO **BALTIC 175**

CANNES YACHTING FESTIVAL **MONACO YACHT SHOW** CORFU CHALLENGE 2017

**THE TUSCAN EXPERIENCE** THE BIG BLUE WONDER  
BLENDS **XC40 VOLVO** PROJECT BOLIDE





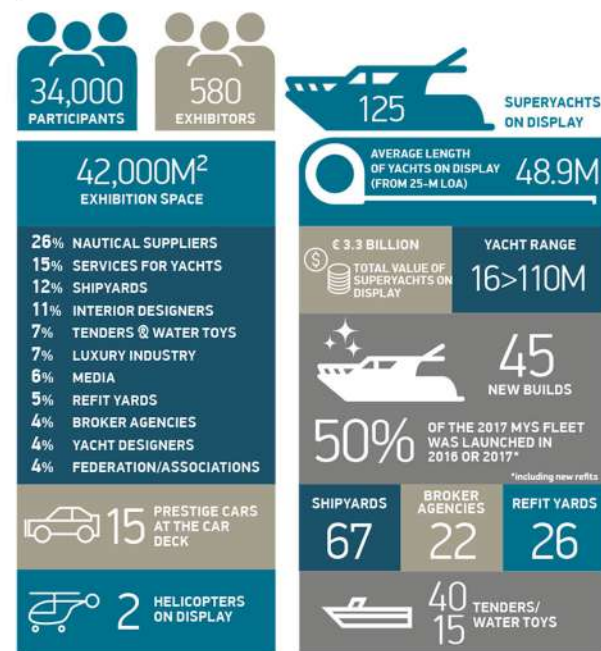


*the place to be*

MONACO YACHT SHOW 2018  
27 SEPT — 30 SEPT, PORT HERCULES

Looking back to the origins of the Show, it is amazing to think that just 32 superyachts were on display in 1991 and, even by the 8th edition, there were just 80 yachting-related exhibitors ready to participate. As the yachting industry itself expanded exponentially over the past 20 years, so did the Monaco Yacht Show, with the 2017 edition expecting 580 exhibitors hailing from 38 different countries and an unrivalled total of 125 of the world's most impressive superyachts on display. This year the Monaco Yacht Show presents 45 new superyachts. Considering that on average per year there are around 150 new superyachts delivered, of which a vast number are reserved for private use only and never presented to the public, this impressive number confirms the importance of the Show for shipyards and industry professionals to display their new products. The past four years have been some of the most significant with regard to the growth and development of the Show. Organisers have focused on enabling both the Show and the destination shine through

to new markets, or, indeed, markets that need reminding of what the show can offer. China and the Asia Pacific region are just two of these markets, which are predicted to become increasingly significant in the foreseeable future. At the latest edition we saw several exciting initiatives at the Show. In fact, the Show is proving that they are dedicated to future-proofing their success with developments such as the Monaco Yacht Summit, the new Starboard exhibition-lounge, the Tenders & Toys exhibition area, the Car Deck - dedicated to rare and exclusive luxury cars - or the MYS Sapphire Experience, a VIP program of visit reserved to the wealthy clientele of the Show. Among the Greek Exhibitors we saw Spanopoulos Shipyards, Koronakis Ropes, Ribco with Venom 44 and many representatives of the most important Greek companies.



Rania Stypa - Yukay with Halit Yukay, partners at Mazu yachts, in front of Mazu 42 walk-around



(l-r) Pat Sakellaris with Popi Kaia, Charter Director and Michael Skoulidakis, CEO at Atalanta Golden Yachts



Greek Stand I (l-r) Olga Trifili, Marina Gerolymatou (D.Koronakis SA) with Betty Gkika, Business Development Manager (Spanopoulos Group) and Evita Kargioti (360° Hellenic Services)



George Ertzos, president and founding partner at Atalanta Marine, official dealer of Nautor Swan



The Marina Flisvos Team: Despina Psichari, Customer Service and Marketing Manager with Stavros Katsikadis, Managing Director at Flisvos Marina



The Privatsea team: Ann Montebello (Hotel & Marketing), Alexandra Thanou (Account & Financial manager), Eleni Bakatsi (Administration), Panagiotis Zacharakis (Deputy CEO), Ariana Konidi (Hotel & Marketing)



Yannis Tsavdaridis with Katerina Tsavdaridis, partners at Nautilus



Sergio Cutolo with Myriam and Nadia Cutolo



**BENETTI SEASENSE**

Benetti's latest creation. The Seasense is one of the most interesting yachts in the Show. Measuring 67m in LOA and bearing the design signature of Cor D. Rover, the yacht features spacious exterior areas and the largest aft pool we have come across lately.



**FEADSHIP AQUARIUS 92.** One of the latest creations of Feadship and one of the star yachts of the Show. Measuring 92 m LOA and boasting a beam of 13.50m, the Aquarius comes from the boards of the Dutch company Sinot Exclusive Yacht Design, which was also responsible for the interior design together with the owner's design team in close cooperation with Feadship De Voogt Naval Architects.



**OCEANCO JUBILEE**

The largest yacht ever to have moored at the Show and the largest ever to have been built in the Netherlands. Oceanco Jubilee is a 110m yacht, whose exterior was designed by Igor Lobanov, while Sam Sorgiovanni is responsible for her interior. The yacht can accommodate 30 guests in 15 cabins (1 owner's suite, 4 VIP suites, 10 suites).

**LURSEEN ARETI 85M**

Lurseen launched the ARETI, a boat we visited and feature in this issue.



**DAMEN GAME CHANGER 70**

A yacht support vessel with fully certified helideck and heli hangar. It is the fourth Yacht Support vessel in the 70-metre segment. In addition to the helideck and large deck space for tenders and toys, there is a below-deck space for cargo, dive centre or owner-specific function.



**CLOUD 9 CRN**

The new 74-meter long CRN masterpiece. Cloud 9's design concept is characterized by a sleek profile further enhanced by subtle design details in the superstructure and by the sophisticated elegance of the interiors, resulting in a world-class superyacht.

**HESSEN YACHTS**

Home is the world's first Fast Displacement with hybrid propulsion. Home is a 50m aluminium motoryacht below the 500GT threshold with a radical exterior design by Omega Architects.



**TANKOA YACHTS S501**

The latest arrival of the Italian Tankoa. The Vertige features 49.90 m in LOA and was designed by Studio Paszkowski Design. She is the second yacht in this line and belongs to an experienced French owner.



CREATED BY EXCLUSIVA DESIGN AND TANKOA YACHTS, SHE IS A 72 M SUPER-YACHT, RADICAL BOTH IN DESIGN AND IN HER INTERPRETATION OF LUXURY. INTERIOR AND EXTERIOR AREAS HERE REPRESENT SOMETHING ABSOLUTELY INNOVATIVE ON THE INTERNATIONAL SCENE

The PROJECT BOLIDE, the result of a year of research and product reviews which has already passed all feasibility tests, is based on three key ideas.

The first idea is clearly evidenced by the 500sqm of ample glass surfaces that seem to blend with the steel hull, ensuring an immediate and uninterrupted view of the sea and the surrounding environment for the owner and his guests. The second idea regards the functionality of interior space where special attention has been given to comfort. This has all been accomplished by means of innovative solutions and detailing, while the highest standards of privacy are maintained. The perfect example is the owner's suite: the owner has his own private bathroom, gym, spa, dressing room, terrace and Jacuzzi. A fully equipped apartment with completely private access, all fitted in a layout that includes five VIP suites. Great care was also taken when designing the transformable ambience. This is showcased at the main swimming pool (there are three pools on board) which can be transformed for events and parties by means of a cover that rises from the bottom of the pool to flush with the deck. The third key point is the interaction between the inside and outside, which, having been designed by the same design team, reaches the point of perfect harmony. The available floor space reaches an incredible 1,500 sqm, 600 sqm of exterior deck and 900 sqm for the interior.

**Specifications**

HULL TYPE	Displacement
HULL MATERIAL	Steel
SUPERSTRUCTURE	Aluminum
PROJECT ENGINEERING	Ruggiero S.r.l.
EXTERIOR - INTERIOR DESIGN	Fabio Mazzeo - Exclusiva Design
LENGTH OVERALL	72 m
MAXIMUM BEAM	12 m
DRAFT	3.38m
DISPLACEMENT AT FULL LOAD	1300t appr.
GRT	1800 GT appr.
TOP SPEED (AT HALF LOAD)	18 knots
RANGE AT 12.5 KNOTS	>6,000 nm
FUEL CAPACITY	160 m <sup>3</sup>
FRESH WATER CAPACITY	37 m <sup>3</sup>
MAIN ENGINES	Cat 3516 B DITA-SCAC HD
MAXIMUM POWER	2 x 2000 kW



www.tankoayachts.it