



n. 58 - Summer 2018 - Euro 8,00 - US \$ 16,50 - £ 8,00

Superyacht

international

SOUTHERN WIND SEATIU
NUMARINE 32XP MARL
SANLORENZO SX8
SWAN 95 LOT9



WORK IN PROGRESS CODECASA 55 HULL C 123 - TANKOA S 701 SOL

SUPERCAR BENTLEY CONTINENTAL GT - BMW INDIVIDUAL M 760 L

TECHNICAL HULLS ON AIR - NAJAD DYNAMICS STABILIZER

MEETING SINGAPORE YACHT SHOW

SHIPYARD OVERMARIN



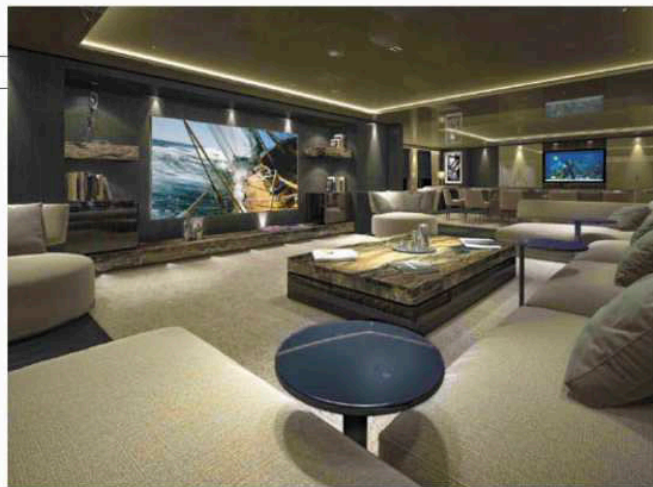
SOUTHERN WIND: THE FUTURE WANTED BY PERSICO

Superyacht **TANKOA**
 WORK IN PROGRESS
S701 SOLO
 by Danny Lo

The new Tankoa S701 "Solo" is due to hit the water in July next and will be officially making its debut during the next 2018 Monaco Yacht Show.

"Solo" is 72 metres long and recalls in terms of design the 69 metre "Suerte" also designed by Francesco Paszkowski with Margherita Casprini's contribution for the interiors. This new yacht obviously sports more volume, we're looking at about 1,600 gross tons and substantial diversities in terms of layout and in decor. Immersed exhausts and piping have resulted in accrued external spaces which means extra spaces made available to visiting guests such as a larger winter garden and a six metre pool which extends across the main deck. The interior layout can accommodate up to twelve guests in six cabins. The owner's is up on the fly deck while the VIP, two doubles and two twins are situated along the main deck. The media/ massage area as well as the owner's study can double as extra cabins with dedicated bathroom.

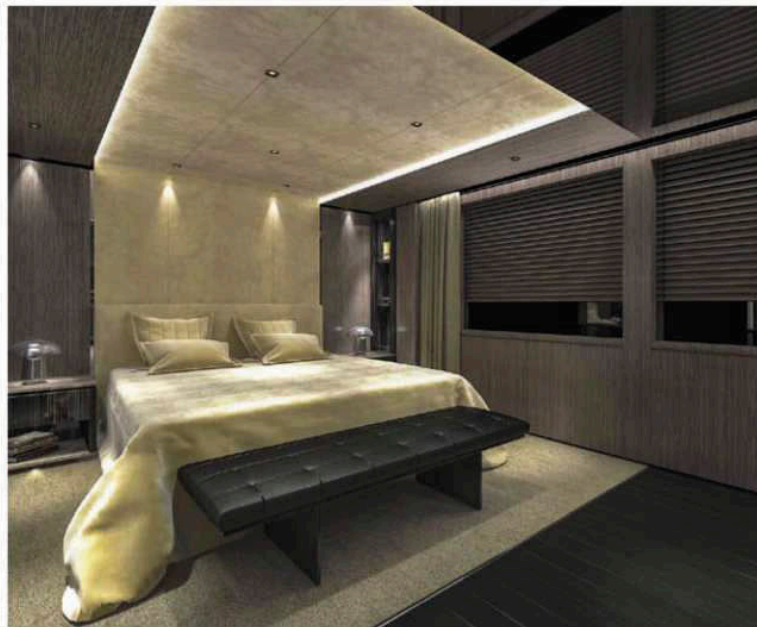
"Solo" has been designed to the owner's requirements and to match up to charter parties' needs and has been decked out accordingly. Therefore there's a large beach club with adjacent lounge, an extra large gym, sauna and Turkish baths, a notable choice of toys and tenders stowed in the stern and bows, a deck which is dedicated to latest generation entertainment gizmos and a technical area. The upper deck for example sports a large salon/ panoramic lounge with a QLED 4K television set with a 90" screen, a baby grand piano, a bar and a fireplace. In addition to the 180° panoramic view from the owner's suite situated on the fly deck, there are two external lounge areas with coffee tables and armchairs to one side, a sun bathing area on the other with a Jacuzzi tub enclosed by



Tankoa

Shipyacht WORK IN PROGRESS

S701 Solo



cut glass walls and a direct access to the touch-n-go helipad certified up to 4.5 tons.

"The owner is a truly experienced boat lover" commented Michel Karsenti Sales and Marketing Director and board member at Tankoa. "This is his second boat with Tankoa and his wish is now to put Solo on the market for sale and build a new Tankoa, probably larger. It is surely rewarding for all of us at Tankoa to see a client who basically has very little time to enjoy his boat considering his hectic business life but enjoys

the construction and creative process so much. As much as we would like to see the client enjoy his boat we are truly happy to have developed such a trustful relationship with such a knowledgeable client. Solo will be exhibited in Monaco and will surely sell quickly as she is an exceptional yacht that will demonstrate that Tankoa is the alternative to Northern European shipyards to build a high quality yacht at reasonable cost and extreme flexibility. But overall, the most amazing factor between his previous yacht Suerte and the new one, Solo, is the countless number of technical details that have been improved. The interior is also very different with all seats and tables by Fendi Casa. I am pretty sure Solo, like Vertige, will have a big impact on the market at the upcoming Monaco Yacht Show".

For further information: Tankoa Yachts; Via Cibrario snc, 16154 Genova Sestri Ponente; tel. 010 8991100, fax 010 891118; www.tankoa.it - info@tankoa.it

TECHNICAL DATA

LOA: 72.00 m – Beam: 11.60 m – Draught: 3.38 m – Displacement fully laden: 1,250 tons – Gross tonnage: 1,600 GT – Fuel tank capacity: 162,000 litres – Water tank capacity: 37,600 litres – Engines: 2x1.825 kW CAT 3516 – Top speed declared: 17.5 knots – Range at 12.5 knots: >6.000 knots – Stabiliser system: VT Naiad, Zero Speed – Yacht type: Displacing motor yacht – Class: Lloyd's-RINA (MCA LY3) – Construction material: steel and aluminium – Naval Engineering: Vincenzo Ruggiero/Tankoa Engineering – Exterior Design: Francesco Paszkowski Design – Interior Design: Francesco Paszkowski e Margherita Casprini.