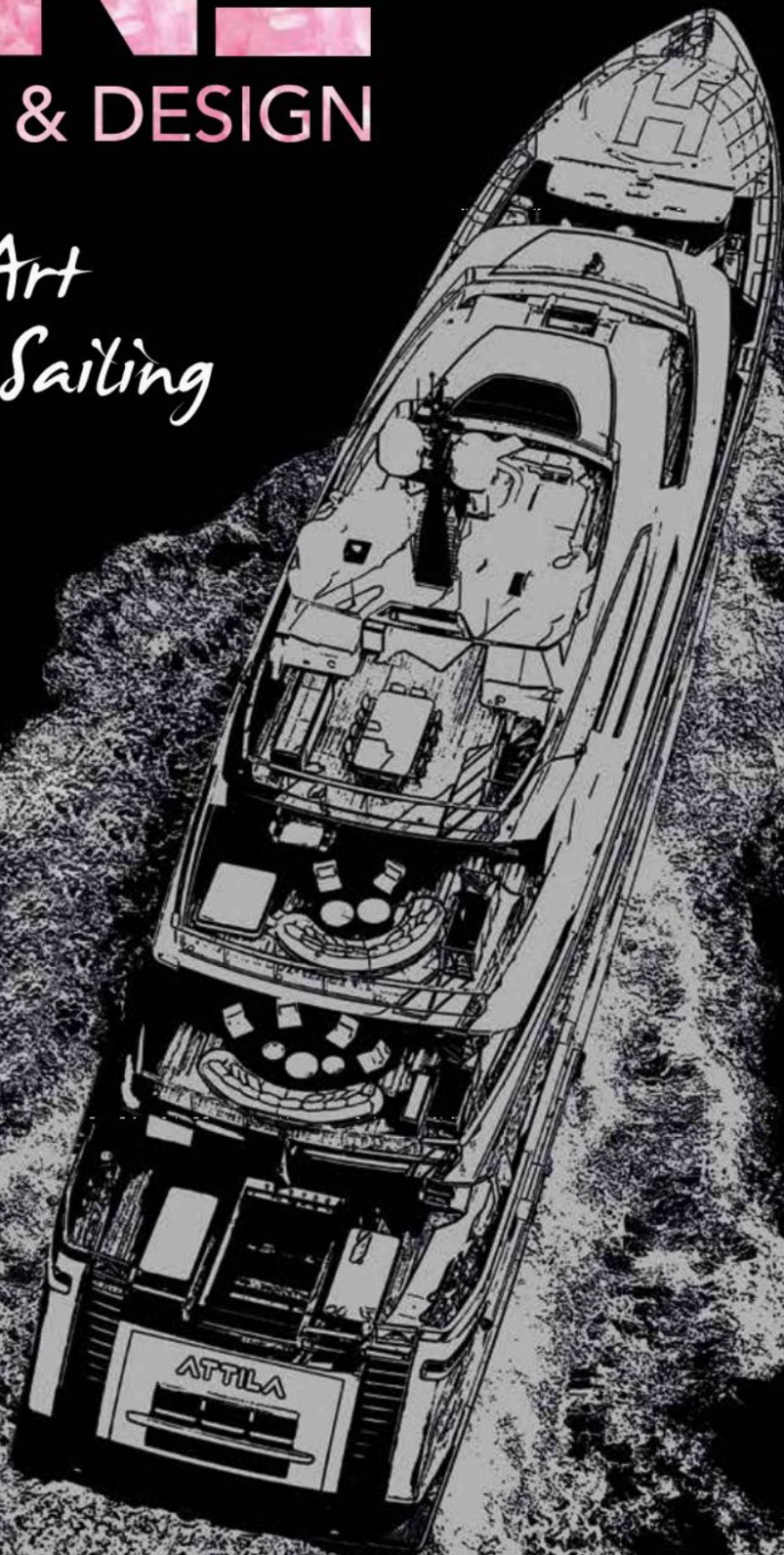


THE ONE

YACHT & DESIGN

*The Art
of Sailing*



Attila 64Steel
Sanlorenzo Yachts

QUARTERLY - P.I. 31/0772020 International € 10, Chf 10.50, UK £ 7.50 Poste Italiane S.p.a. Spedizione in Abbonamento Postale - 70% - LO/M



Bintador

The latest model from Genoa-based yard Tankoa is a 50-metre aluminium 3-decker with interiors and exteriors by the Francesco Paszkowski Design studio. The result is a dynamic, contemporary yacht whose spaces reveal the owner's personality. Hybrid propulsion adds green credentials to the build

by Marta Gasparini - pct. by Riccardo Borgenni

They say appearances can be deceptive, and though Vertige, the Tankoa yard's first yacht in its 50-metre series, and Bintador are sister ships, only their lines are similar – indeed, they are striking examples of how twins can be anything but identical under the skin. For the Bintador's new owner it was love at first sight when he visited the yard, when the yacht was already under construction, and a shared vision provided a solid basis throughout the project's development. The client has a passionate interest in yachts and design, and his aim was to create a pleasant retreat, a secluded place offering personal time for relaxation and rest without compromising the contact with the sea he values so highly. The hybrid propulsion also responds to the demands for comfort, silence and reduced consumption that were among the specifications in the original brief.

This set quite a challenge for Francesco Paszkowski, who was also responsible for the interiors and exteriors of the Vertige, as he was tasked with creating the bright, airy oasis the clients wanted, enabling them to feel as if they are in a large villa on the sea. The list of requirements was long and ambitious, with some non-negotiable items like a five-cabin layout in contrast to the six cabins on the Vertige, with the four guest cabins, two VIP and two guest, on the lower deck, moving the owner's suite to the main deck, creating a galley on the same level rather than on the lower deck, now reserved for the crew canteen, and transforming the forward area so that it can accommodate a touch-and-go helipad instead of the lounge and storage space for electric bikes, a tender and jet skis.

These sweeping changes mean that the owner's apartment is now located forward. To create privacy and intimacy it has a single terrace along the starboard wall, whereas Vertige has two, one starboard and one port. On the same level, the private galley fulfils another precise specification – a large space for breakfast and lunch where the owners and family can feel comfortably at home. This is the reason for the central counter with stools, and the galley's location on the main deck, bathed in natural light flooding through the windows.



In an interior surrounded by white from floor to ceiling, including the worktop, a touch of warmth and solidity is provided by the dove-grey panels that clad some surfaces and create a tactile background. No concession to colour is made in the rest of the interiors, where a balanced selection of bright colours including greys, beige, ivory and neutral tones give character to the whole, recurring throughout to bring together the various levels of the yacht. The ceilings, often featuring mirrored surfaces, wood and soft carpets, lend an air of exclusivity to the spaces, embellished here and there by pieces like the metal disc by Shine Mosaïque on the dining area wall and selected design objects.

Careful thought has also been given to the development of Bintador's new look, which has been reinterpreted to give shape to striking visuals, soft, flowing connections between the spaces,

pure volumes and also to enhance the presence of natural light. Large windows, in fact, create an effect of expansion and continuity towards the exterior and give the spaces the opportunity to breathe, taking full advantage of the daytime sunlight and casting attractive reflections towards the exterior when night falls, bathing the sea in glints of warm light.

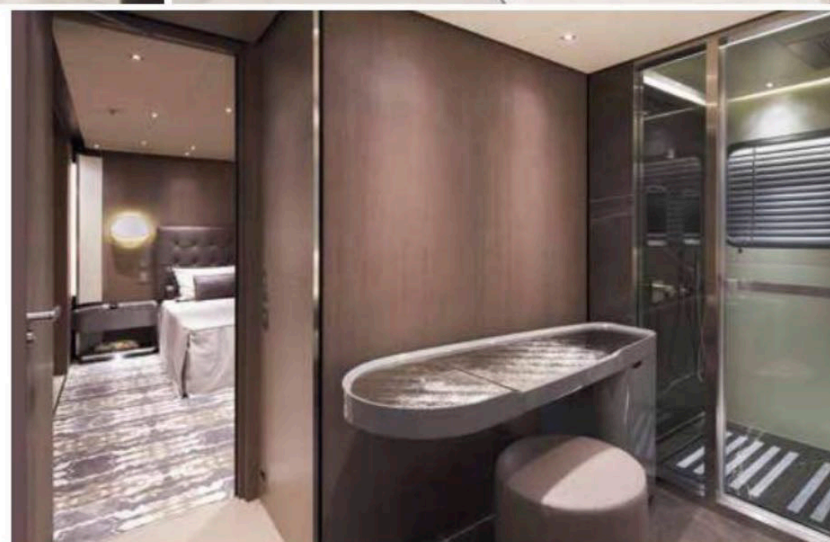
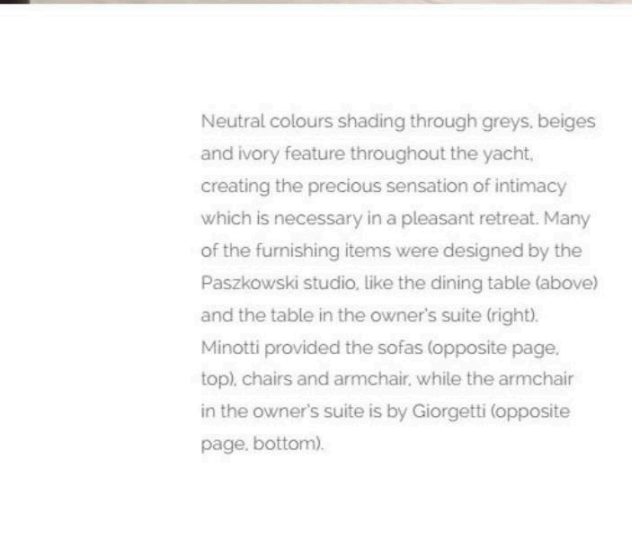
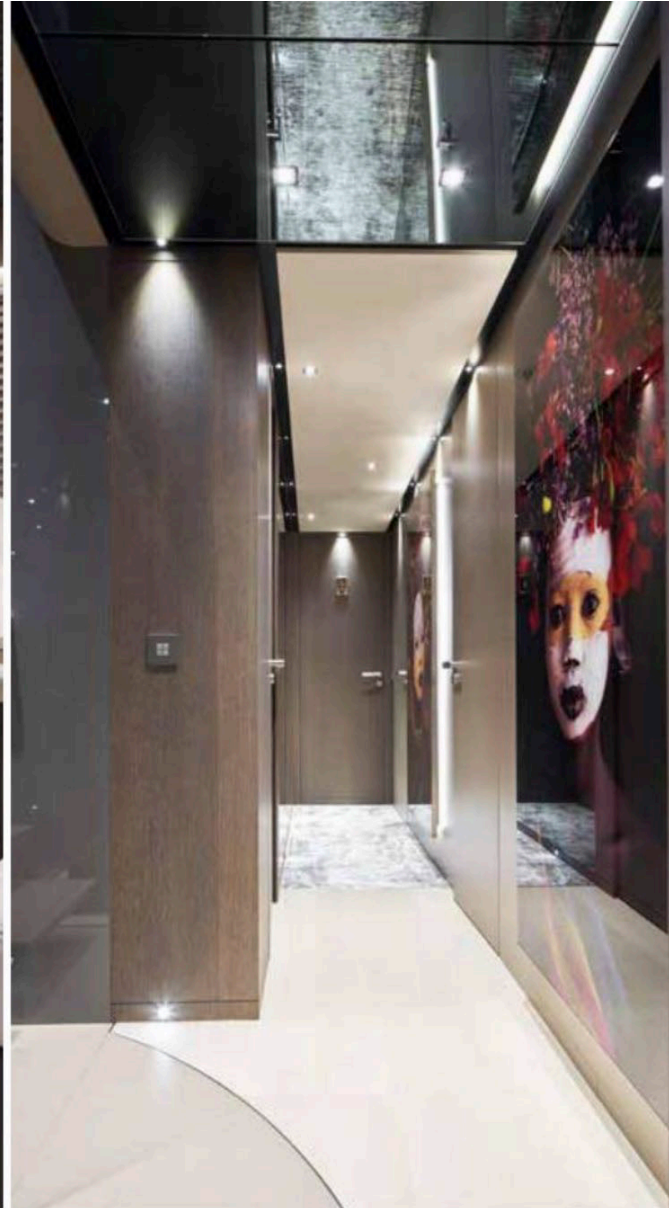
The approach to design shared by the architects and owner has led to a pitch-perfect furnishings mix that is now a hallmark of Francesco Paszkowski and Margherita Casprini – a linear yet welcoming design that speaks of refinement and elegance, an effect softened by warm accents in the wood flooring and the furnishings. Custom furniture is complemented by pieces from famous Italian brands like Minotti and Giorgetti for sofas, chairs and armchairs, generating the warm intimacy of a lived-in domestic space.

A single wood - brushed, sanded oak - has been chosen for floors and some panelling, with bright painted surfaces for the ceilings and bathroom walls. Honey-coloured Botticino is used for the bathroom tops with polished Persian grey for the shower unit floors and walls, while Calacatta makes a striking appearance in the coffee tables on the upper deck. The result is a modern yet timeless motoryacht that oozes class and is made-to-measure for her owners.

www.tankoa.it

A touch-and-go helipad on the Bintador's bows along with five e-bikes. To the side, the metal disc by Shine Mosaïque on the wall of the dining room. Opening, the refined main deck lounge. The furnishings are given fluidity by the walls at the entrance and the dining area, decorated with oak strips on a glossy lacquered surface with a cloud effect





Neutral colours shading through greys, beiges and ivory feature throughout the yacht, creating the precious sensation of intimacy which is necessary in a pleasant retreat. Many of the furnishing items were designed by the Paszkowski studio, like the dining table (above) and the table in the owner's suite (right). Minotti provided the sofas (opposite page, top), chairs and armchair, while the armchair in the owner's suite is by Giorgetti (opposite page, bottom).



Bintador is the result of a collaboration between the yard, our studio and the owner, who has a passionate interest in yachts and design (Bintador isn't his first yacht) and wanted to see his dreams transformed into reality – a magical brief for a design studio.

The yacht is intended to be for personal use only, and is markedly different from the first example, Vertige, which we worked on in 2017.

The programme began to take shape after a series of preliminary meetings involving the presentation of the initial proposals integrated with a set of increasingly precise specifications from the client, who took part in all the executive stages. This enabled us to shape the project gradually, stage by stage. Tankoa's contribution was crucial, especially in the precision of the details and support in finding the best solution for our requirements. We concentrated on enlarging all the exterior surfaces, from the sunpads to the open-air conversation areas and the forward and aft terraces. We also eliminated the lateral gunwales to create wider views and created large windows to provide the greatest degree of continuity between the interior and exterior. The vertical bow enabled us to increase interior volume and surfaces, making it possible to stow a tender. One of my favourite areas is the spacious cockpit with sunpads, large sofa and two side terraces. It creates the atmosphere of a raised beach club in direct contact with the sea – by sitting in the shade on the sofa, for example – and the two folding balconies open out an unforgettable view. The final result is a contemporary design with generous social areas on every deck, a helipad (a feature missing on the Vertige) to suit the demands of the owner, an expert pilot, and interiors that communicate with the exterior seascape.

The yacht's clean lines are emphasised by the vertical bow, which becomes one of the yacht's distinguishing features. The aerial shot to the side shows the generous dimensions of the exterior surfaces



Francesco Paszkowski Design with Margherita Casprini

This project is based on design coherence and stylistic harmony, complemented by a number of outstanding architectural elements. The owner knew exactly what he wanted – an intimate, welcoming setting with a timeless elegance. He gave us a free hand in creativity and the presentation of solutions we analysed together. He also enhanced them with some special requirements. We focused on developing bright, modern scenarios with an amazing combination of colours and material finishes – wood, marble, leather and fabrics – that harmonise to give the style continuity and coherence. The result is a soft sequence of tones that shift gradually from clear to darker shades, moving from the ivory ceilings to the sand colour sofas, the cord of the chair in the owner’s suite, the clay colour upper deck sofas, the dove grey of the leather on the stairs and the light bronze sofa legs. The glossy panels, all in light shades, help emphasise the bright appearance of the whole.

Two architectural elements stand out in the interiors – the first is the stairway connecting the decks with shaped steps lined with dove-grey leather and featuring visible diagonal stitching, a solution that gives the stairwell a feeling of airy lightness, together with the satinised steel of the steps and handrail and the leather

and lacquer finish on the walls. The second is the partition forward of the dining area decorated with oak strips applied over a bright lacquered surface with cloud effect that gives fluidity to the furnishing concept, a theme repeated in the sides of the entrance to the main deck living area. We also chose to focus on contrasts, like the one created by the flooring and some panelling in brushed oak with the bright lacquer ceilings. They were also used on the bathroom walls. Not forgetting the effects created by the marble in the bathroom – the honey Botticino on the unit tops, the glossy Persian grey for the flooring and panelling in the bathrooms, and the Calacatta coffee tables on the main and upper decks. The role of creating intimate settings in several areas is played by the warmth of the leathers (on the bedhead and the surfaces of the upper deck TV unit top, while the sofa cushions are in fabric, leather and velvet). Glass has been exploited to the full and presented in a variety of looks (smoked mirror in the shower and bathrooms, bronze-gold with a fabric effect for the bedside cabinet tops and vanity units in the owner’s suite, bronze-gold on the main and upper deck lounge furniture and the bedside cabinets in the guest and VIP cabins). Finally, lighting is provided by LED strips and spotlights to create special effects.

Francesco Paszkowski and Margherita Casprini, the successful team behind Bintador’s interiors



The picture windows that frame the lounge and create an impression of expansion towards the exterior. Opposite page, the private kitchen on the main deck specified by the owner, a white capsule with panelling and details in grey and dove-grey steel



Giuseppe Mazza, Sales and Business Development Manager at Tankoa

When the owner contacted the yard – he was aware of its reputation as a boutique shipyard – the second 50-metre yacht was already under construction. Discussions began not long afterwards between us and the owner’s agent, Giancarlo Mussino, with whom we have an excellent professional relationship. The decision-making process lasted six months, a period during which the client evaluated projects from other yards, but in the end he decided to allow us to realise his dream. A relationship was forged immediately after he saw Vertige, and the quality inherent in Tankoa’s work was a determining factor. The contract

was signed, and he made a number of visits to the yard to follow the build more closely.

The owner also concurred with our choice of motorisation, a hybrid propulsion system that closely matched his requirements in terms of performance, low fuel consumption, silence and sailing comfort. We put a lot of effort into finding the best solutions available. I should point out that the owner has a technical background in this field, and played an active role in the choice of system. Now, after a first season with over 5,000 miles of sailing and two Atlantic crossings, it can be said without fear of

contradiction that the choices made have proved to be successful.

The brief also included a touch-and-go helipad forward instead of the lounge, whose front section has been covered to create a landing platform that conforms fully to existing regulations.

The owner enjoys getting exercise with his family and friends, so in front of the helipad we’ve included a garage for five bikes, with equipment for diving and other activities in the beach club area. Fresh from the success of its 50-metre line, Tankoa is now building two more examples – the first has already been sold and will be delivered at the end of the year, while the second, set for launch in December 2021, is being constructed on spec. Production of the new Tankoa 45-metre is to start soon.



Bintador is powered by a high-level hybrid propulsion system with a pair of (895 kW) MTU 8V4000M54 engines and two 300 kW electric units with two variable-speed 250 kW generators. Maximum speed is 18 knots with a range of 4,000 miles at 12 knots

